

MEGA LIGHT TOWER LIGHTING

For Models : All Mega Light Plant Models

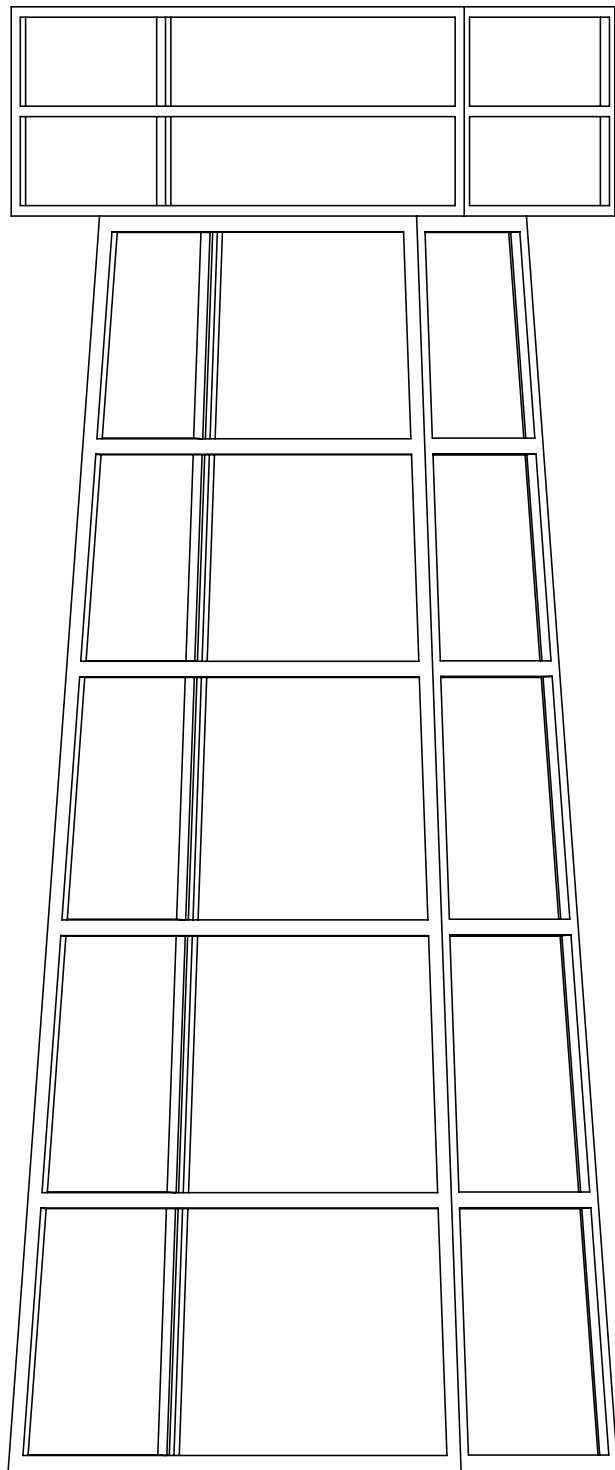


LED | LIGHTING CATALOG





MEGA LIGHT TOWER FITOUT GUIDE



WORK AREA LIGHTING
AC PITMASTER-SERIES
Number of Fixtures : Tower Specific
Location :
Beam Pattern : 90°
Part # : **LSG066090TRHD**



AC | WORK AREA LIGHTING

Product Information

Project Name:
Date:
Type:

Application

Designed to outshine and outlast the competition, the AC PitMaster fixture features advanced electronic technology like Pulse Width Modulation, Electronic Thermal Management, and a Redundant Circuit Design (60 LED) that allow the fixture to function even if half of the light should fail in harsh conditions. This is part of the effort by Vision X to ensure that the PitMaster fixture is the most dependable LED fixture in the workplace.

SPECIFICATIONS

Mechanical Information:

Fixture Weight:	54.6 lbs (24.77kg)
Shipping Weight:	62.60 lbs (28.39kg)
Mounting/ Entries: (See Accessories)	(1) 3/4" NPT - TOP (2) 3/4" NPT 90° - SIDES (2) 3/4" NPT 45°- SIDES

Electric Specifications:

Operating Voltage:	90 - 305V AC
Wattage:	280W
Operating Temp:	-40°C ~ 60°C
THD:	<20% (@load≥50% / 115VAC,230VAC) (@load≥75% / 277VAC)
Power Factor:	≥ 0.98/115VAC ≥ 0.95/230VAC ≥ 0.92/277VAC
Short Circuit:	Constant Current Limiting, Recovers Automatically After Fault Condition is Removed
Frequency:	47-63Hz
Vibration:	15.6Grms

Construction:

Housing:	Die-Cast 6061 Aluminum
Finish:	Gloss Grey
Lens:	Polycarbonate Lens

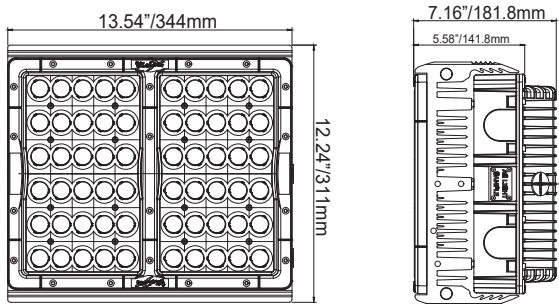
LED Light Engine / Driver

LED:	XP-LHD(CREE)
Amp Draw:	2.43A @ 115VAC 1.22A @ 230VAC 1.01A @ 277VAC
Lifespan:	50,000 hr



PART #:	BEAM PATTERN
1 LSG066090TRHD	90°

2D DRAWING:



RATINGS:

EMC Emission:	Compliance to EN55015, EN55022 (CISPR22) Class B, EN61000-3-2 Class C (@Load ≥ 50%); EN61000-3-3
EMC Immunity:	Compliance to EN61000-4-2,3,4,5,6,8,11, EN61547, EN55024, Light Industry Level (surge immunity Line-Earth 4KV, Line-Line 2KV)
Ingress Protection:	IP-68, IP69k



VISION X USA

1601 Boundary Blvd
Auburn WA 98001
United States of America
P: 253-218-2900
www.vxindustrial.com



VISION X ASIA

23-7 Dongtansandan
9-gil Dongtan-myeon Hwaseong-si
Gyeonggi-do 18487, Korea
P: 82-32-515-4814
www.visionxlighting.com