



P&H 4100

- ALL MODELS -



1 XIL-UM40E3065R



SAFETY WORK AREA KILLZONE LIGHTING

- 4x Side Mounted on Hydraulic Staircases
- 4x Side Mounted on Walkway Forward of Hydraulic Staircases
- 7x Evenly Spaced Across the Top of Rear Counter Weight

1 POWER SUPPLY



P-JBOXPSE

+



XPC-PS185-48A

Three inverters are required to run all 15 lights.
Inverters will require a 90-305v AC Input and will output 43-53v DC to run Kill Zone Lights.
2 side inverters will run 4 lights each, 1 Rear inverter will run 7 lights.

- 1x Inverter to be Mounted Center/Top of Rear Counter Weight
- 2x Inverters to be Mounted Top of Hydraulic Staircases on Each Side of Shovel

Welding of tabs or channel struct installation may be required at each light location.



P&H 4100

- ALL MODELS -

SPECIFICATIONS

MECHANICAL:

Fixture Weight:	2.65 lbs (1.2kg)
Shipping Weight:	4.03 lbs (1.83kg)
Mounting:	Single Bolt M10

ELECTRICAL:

Operating Voltage:	11-65VDC
Wattage:	21W
Operating Temp:	-40°C ~ 80°C
Vibration:	15.6Grms
Connector:	2 Pin Deutsch

CONSTRUCTION:

Housing:	Die-Cast 6061 Aluminum
Finish:	Gloss Black
Lens:	Polycarbonate Lens

LED

LED:	3W (XPG-CREE, RED)
Raw Lumens:	3,451 lm
Amp Draw:	2.97A @ 11.8V
Lifespan:	50,000 hr

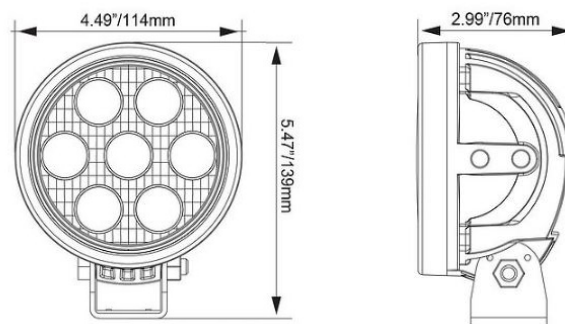
RATINGS:

EMC Emission:	(CISPR 25) Edition 3.0 (2008-03) Class 3
Ingress Protection:	IP-68, IP69k
Warranty:	3 Years



PART #:	BEAM PATTERN	HOUSING
1 XIL-UM40E3065R	Elliptical 30/60° RED	Round
XIL-UM44E3065R	Elliptical 30/60° RED	Square

2D DRAWING:





P&H 4100 - ALL MODELS -

SPECIFICATIONS

Technical Information:

Input Voltage: 90-305V AC

Output Voltage: 43-53V DC

Electric Specifications:

Operating Temp: -40°C ~ 80°C

Vibration: 10~ 500Hz

RATINGS:

EMC Emission: Compliance to EN551015, EN55022 (CISPR22) Class B, EN61000-3-2 Class C, EN6100-3-3

Ingress Protection: IP-67, IP65



ITEM #:

P-JBOXPSE

PART#

9132617

Technical Information:

Input Voltage: 90-305V AC

Output Voltage: 43-53V DC

Electric Specifications:

Operating Temp: -40°C ~ 80°C

Vibration: 10~ 500Hz

RATINGS:

EMC Emission: Compliance to EN551015, EN55022 (CISPR22) Class B, EN61000-3-2 Class C, EN6100-3-3

Ingress Protection: IP-67, IP65



ITEM #:

XPC-PS185-48A

PART#

9903309

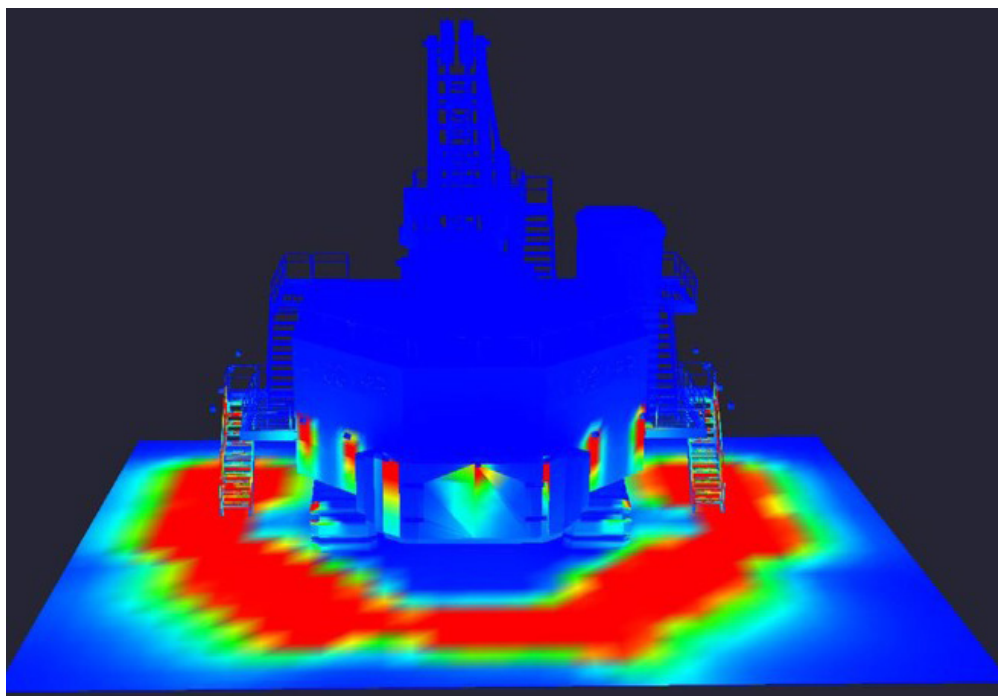
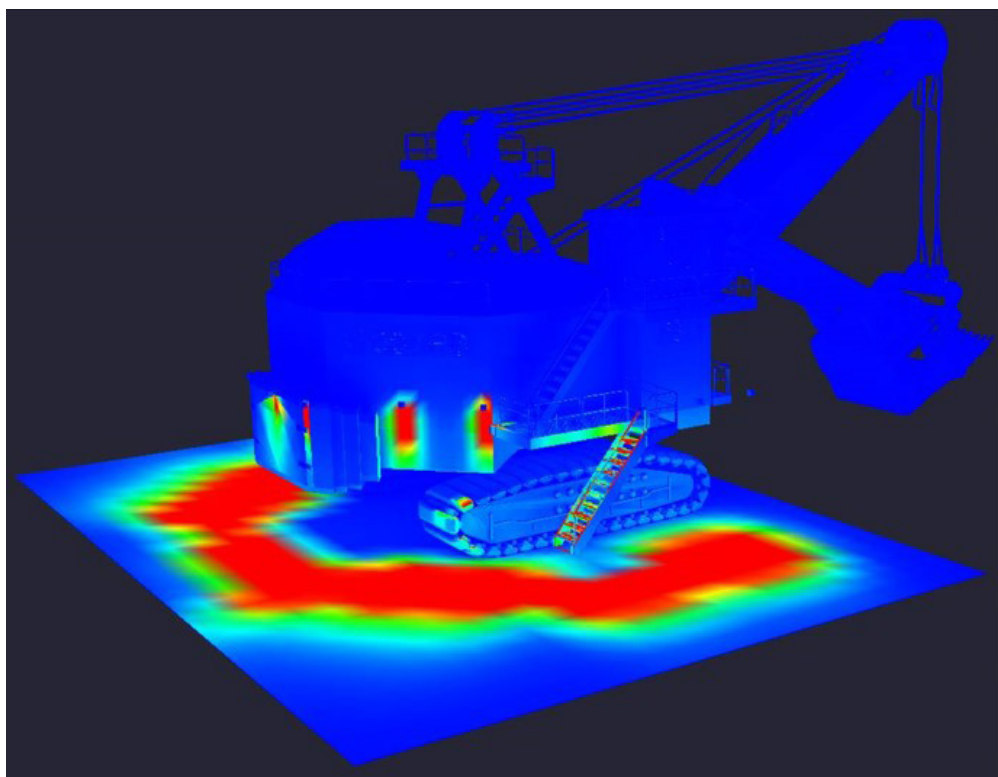
P&H 4100

- ALL MODELS -

Pseudo Color Rendering

Aiming angles in the matrices are purely suggestions to create similar results as renderings.

Protocols should be measured and set for each site based on their own safety standards.

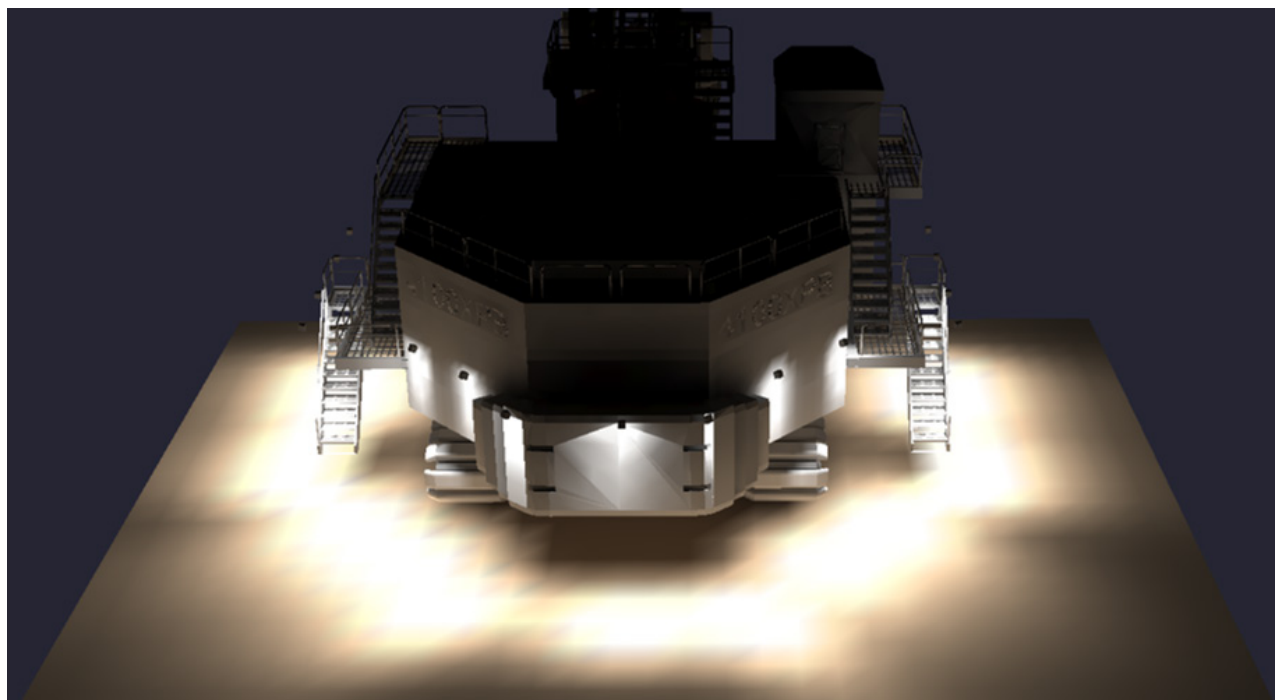
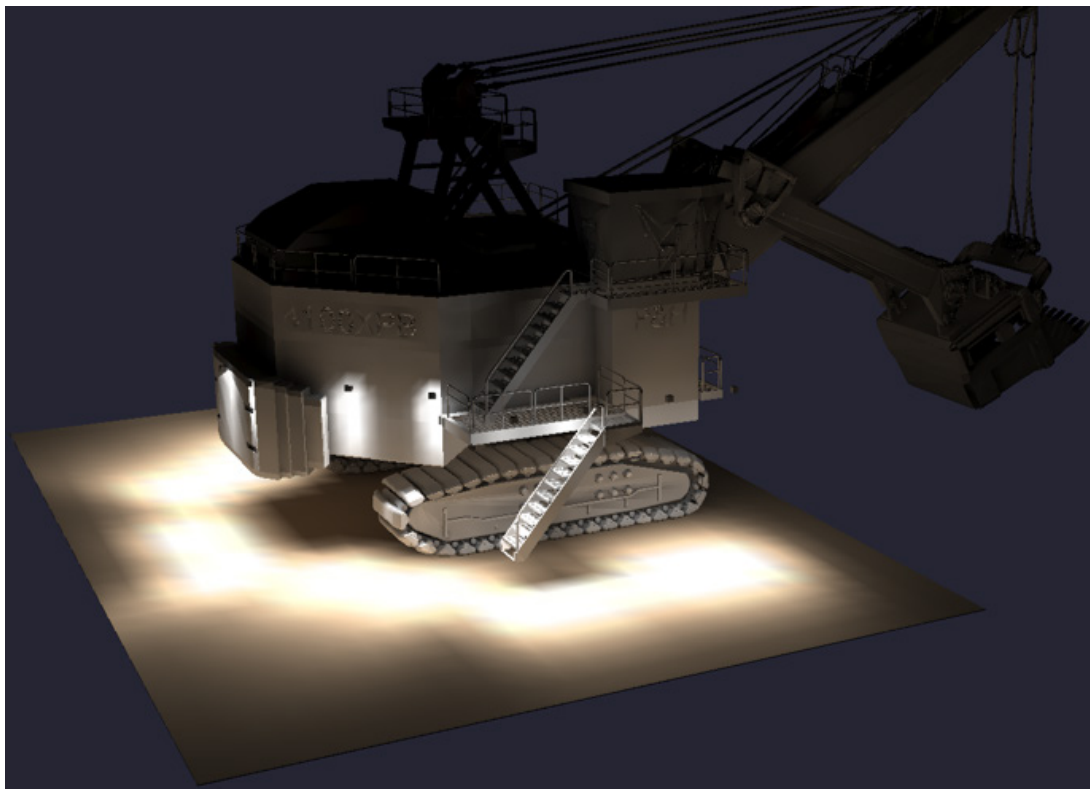




P&H 4100

- ALL MODELS -

Simulation Rendering





P&H 4100

- ALL MODELS -

